



Open Space Education

Co-presenters:

Alexandra Bezner, Open Space Education Coordinator

Anaisa Tyger Núñez, Open Space Education Coordinator



Share Time: Your Favorite Outdoor Space!

In the chat, share:

- The name of your favorite outdoor spot
- What you enjoy most about it (scenery, wildlife, memories, activities, etc.)



CITY OF ALBUQUERQUE OPEN SPACE



WEST MESA

- 1 Quail Ranch
- 2 Grasslands Preserve (Restricted Access)
- 3 Shooting Range Park
- 4 La Cuentista
- 5 Boca Negra Arroyo (Middle Branch)
- 6 La Boca Negra Horseman's Complex
- 7 George J. Maloof Memorial Air Park
- 8 Atrisco Terrace
- 9 Los Metates (Restricted Access)

PETROGLYPH NATIONAL MONUMENT

- 10 Volcanoes
- 11 Piedras Marcadas Canyon
- 12 Boca Negra Canyon
- 13 Rinconada Canyon

RIO GRANDE VALLEY STATE PARK & AGRICULTURE

- 14 Alameda
- 15 Calabacillas Arroyo
- 16 Shining River
- 17 A Iamo Farm (Restricted Access)
- 18 Open Space Visitor Center
- 19 Pueblo Montañño Picnic Area
- 20 Los Poblanos Fields
- 21 Aldo Leopold Interpretive Trail and Forest
- 22 San Antonio Oxbow and Bluffs
- 23 Candelaria Nature Preserve (Restricted Access)
- 24 Pat Baca Open Space
- 25 Rio Del Norte Picnic Area
- 26 Rio Bravo Riverside Picnic Area
- 27 Hubbell Oxbow Farm

SANDIA FOOTHILLS

- 28 Elena Gallegos Picnic Area/Albert G. Simms Park
- 29 Bear Canyon Open Space
- 30 Embudito Trailhead
- 31 Piedra Lisa Trailhead
- 32 Menaul Trailhead
- 33 Embudo Canyon Trailhead
- 34 Copper Trailhead

TIJERAS ARROYO/FOUR HILLS

- 35 Montessa Park
- 36 Via Posada
- 37 Route 66
- 38 Tijeras Bio-Zone Education Center
- 39 Manzano/Four Hills

SANDOVAL COUNTY

- 40 Placitas
- 41 Golden

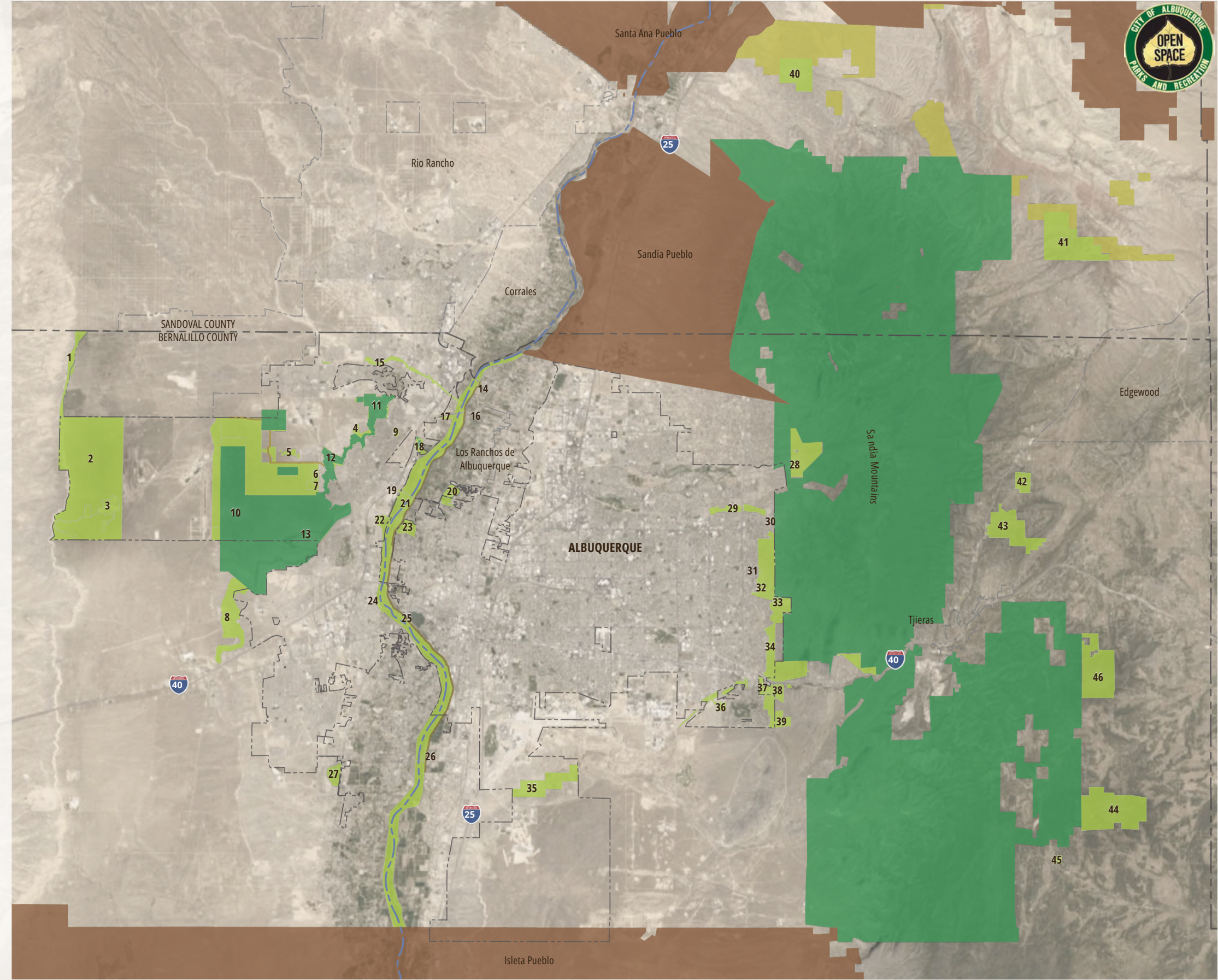
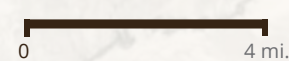
EAST MOUNTAINS

- 42 San Antonio
- 43 John A. Milne/Gutierrez Canyon
- 44 Juan Tomas
- 45 Carolino Canyon (Reservation Only)
- 46 Loma Ponderosa

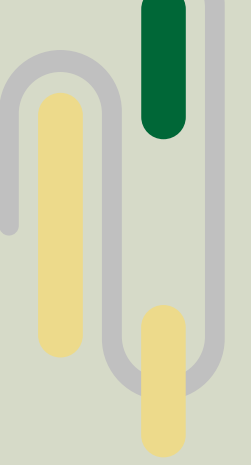
Map Information

- City of Albuquerque Open Space
 - Tribal Land
 - United States Forest Service
 - Bureau of Land Management
 - National Park Service
- County Boundary
 - City of Albuquerque Boundary
 - Town / City Boundary
 - Road, Primary
 - Paseo del Bosque Bike Trail
 - Paseo de la Mesa Trail
 - Rio Grande

Scale: 1 inch = 4 miles



WHY LEARN OUTDOORS?



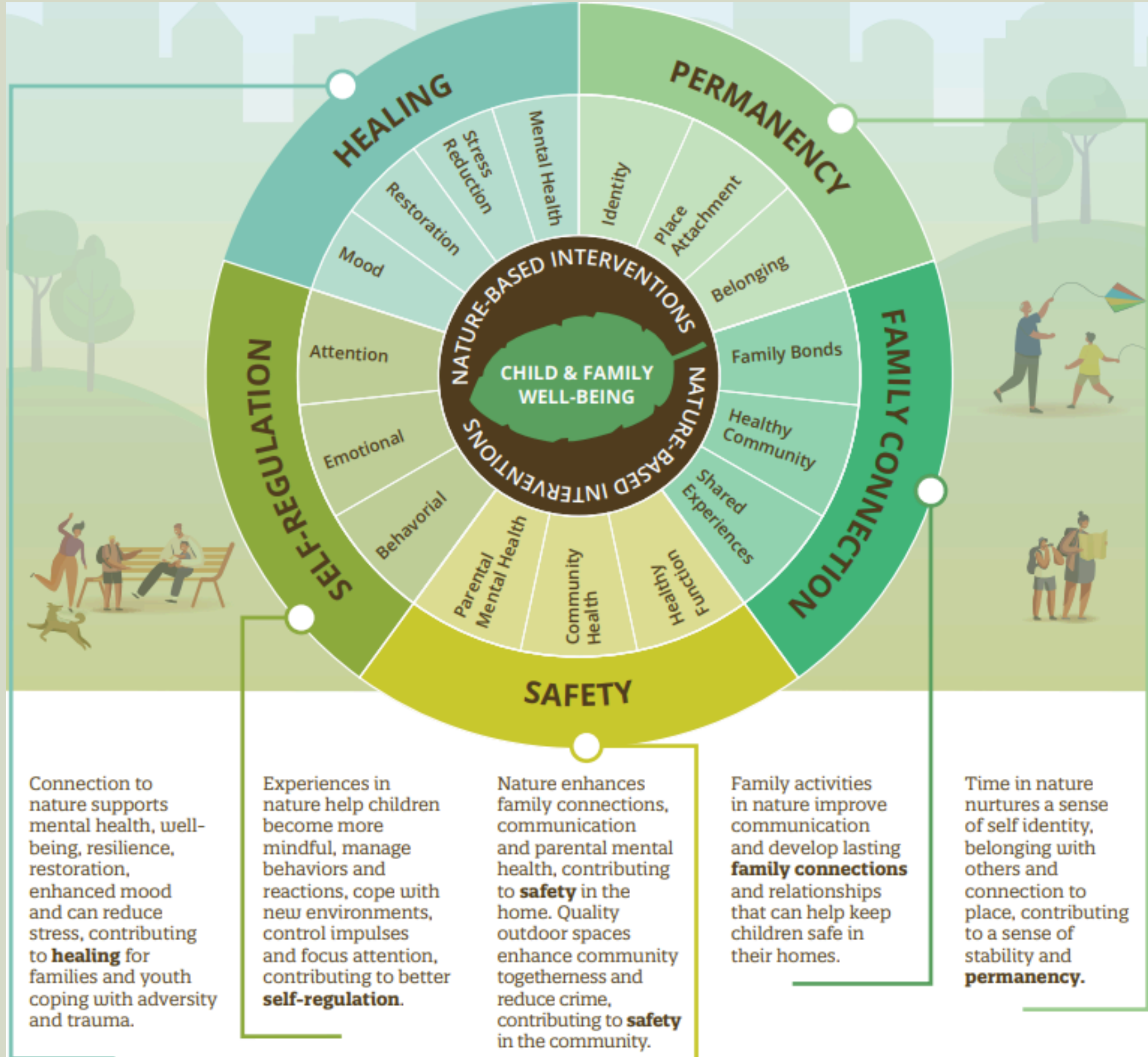
The outdoors is a resource for enhancing learning, social engagement, and health and should be available to all New Mexican students across the state. Experiences in nature and access to the outdoors are associated with greater health and well being and academic success. There are many approaches to outdoor and environmental learning and education, including conservation, experimental, environmental, nature-based and place-based education.

NATURE CAN IMPROVE ACADEMIC OUTCOMES

NATURE PLAY CAN ENCOURAGE CARE FOR THE EARTH



Benefits of Nature-Based Interventions for Children Encountering Adverse Childhood Experiences



OS EDUCATIONAL LOCATIONS




Open Space Visitor Center

- Wildlife viewing
- Nature focused gallery
- Guided hikes
- Volunteer opportunities
- Community events space
- Meeting rooms

Tingley Beach

- Pond life
- Habitat viewing
- Restoration
- Outdoor learning
- Recreation

Candelaria Nature Preserve

- Restoration
 - Biomonitoring
 - Service learning opportunities
- 

OS EDUCATIONAL LOCATIONS



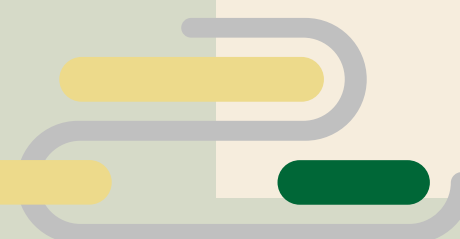
Tijeras Bio-Zone

- Outdoor Learning
- Freshwater Corridor

Elena Gallegos

- Semi- arid to Juniper-piñon woodland
- Habitat observations

Petroglyph National Monument

- Indigenous cultural landscape
 - Cultural and natural resources
- 

PROGRAMS



THANK YOU

Connect with us!

School and Youth Coordinator

Anaisa Tyger Núñez

Email | atnunez@cabq.gov

Office Phone (505) 768-4965 | **City Cell** (505) 549-0504

Community and Outreach Coordinator

Alexandra Bezner

Email | akbezner@cabq.gov

Office Phone (505) 768-4959 | **City Cell** (505) 549-0474